

£455,000

Brighton Road

Lancing, BN15 8JP

PROPERTY SUMMARY

Vacant Possession

We are delighted to offer to the market nestled on Brighton Road in Lancing, this fully refurbished semi-detached house which presents an exceptional opportunity for families and professionals alike. Boasting three bedrooms, this home is designed for comfort and modern living. The property features two inviting reception rooms, perfect for entertaining guests or enjoying quiet family evenings.

The heart of the home is complemented by a stylish bathroom enhancing the practicality of daily life. The house has been thoughtfully extended adding the utility room, providing ample space for all your needs. One of the standout features is the large garden, offering a private outdoor retreat for relaxation and play, ideal for those sunny days.

For added peace and quiet, the front of the property is fitted with acoustic double glazing. Off-street parking for two vehicles is also available, a valuable asset in this sought-after area. With vacant possession, you can move in without delay and start making memories in your new home.

3



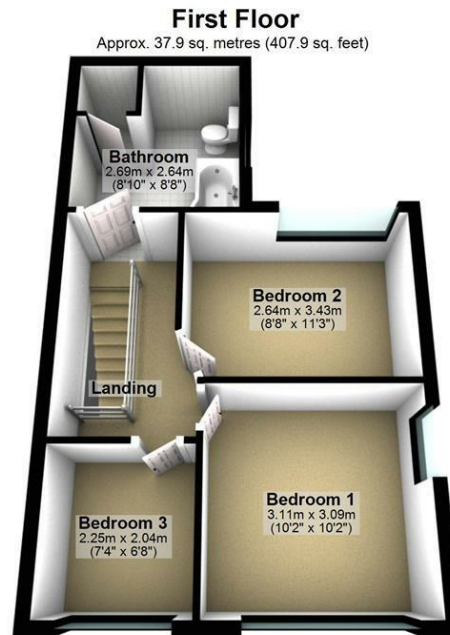
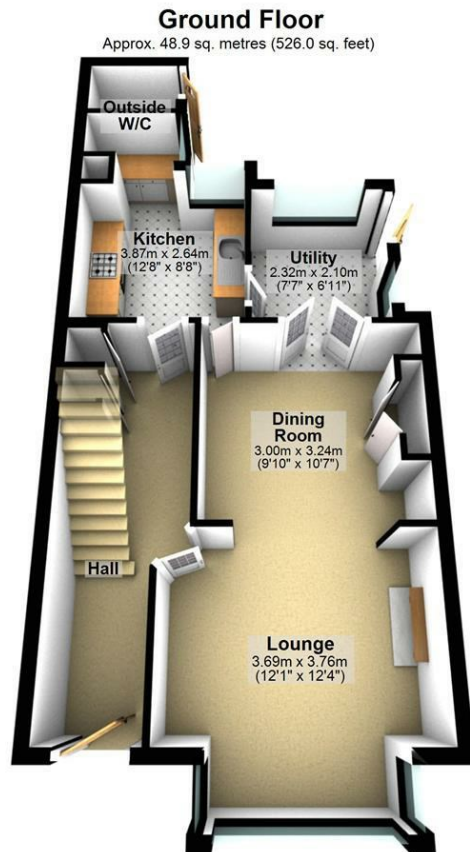
1



2







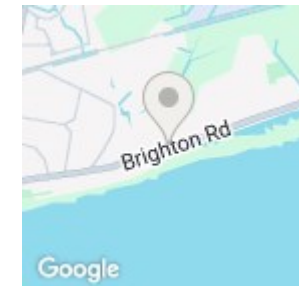
Total area: approx. 86.8 sq. metres (933.9 sq. feet)

LOCAL AUTHORITY

TENURE
Freehold

COUNCIL TAX BAND
C

VIEWINGS
By prior appointment only



Energy Efficiency Rating		Current	Potential
Very energy efficient - lower running costs			
(92 plus)	A		
(81-91)	B		
(69-80)	C	69	78
(55-68)	D		
(39-54)	E		
(21-38)	F		
(1-20)	G		
Not energy efficient - higher running costs			
England & Wales		EU Directive 2002/91/EC	

Agents Note: Whilst every care has been taken to prepare these particulars, they are for guidance purposes only. All measurements are approximate and are for general guidance purposes only and whilst every care has been taken to ensure their accuracy, they should not be relied upon and potential buyers/tenants are advised to recheck the measurements



OFFICE ADDRESS
22 South Farm Road
Worthing
West Sussex
BN14 7AA

OFFICE DETAILS
01903 532225
worthing@localagent.co.uk
www.openhouseworthing.co.uk